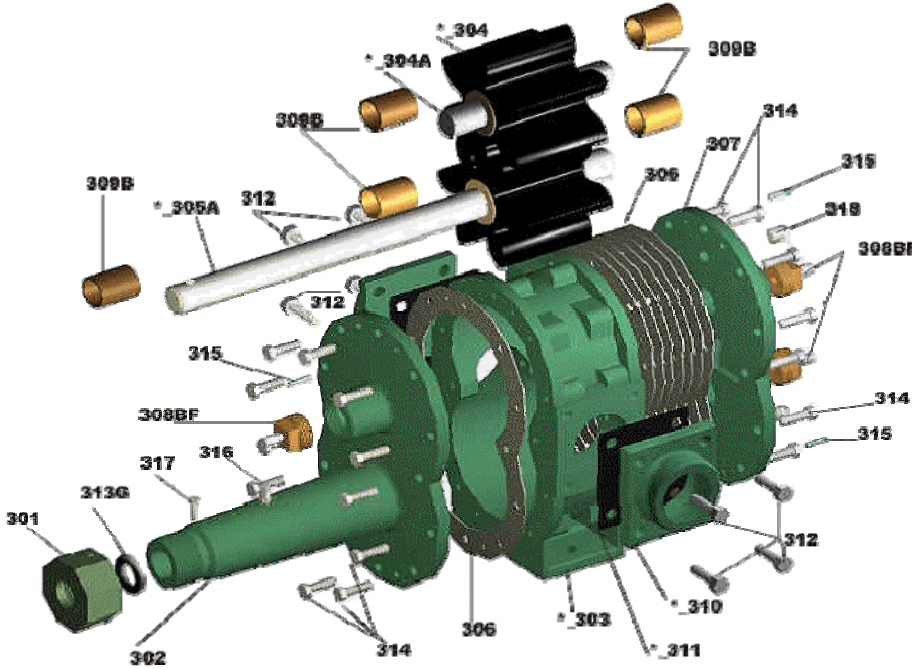


## Bowie 300 Series Pump



| 300 Series Parts |         |                        |     |
|------------------|---------|------------------------|-----|
| No.              | Stk No. | Description            | Qty |
| 1                | 301     | Nut, Packing           | 1   |
| 2                | 302     | Plate, Front           | 1   |
| 3                | 304K    | Key, Gear              | 2   |
| 4                | 306     | Gasket, Plate          | 8   |
| 5                | 307     | Plate, Back            | 1   |
| 6                | 308BF   | Plug, Brz w/ Grs. Ftg. | 3   |
| 7                | 309B    | Bushing, Bronze        | 5   |
| 8                | 313G    | Packing, Graphite      | 1   |
| 9                | 314     | Bolt, End Plate        | 24  |
| 10               | 315     | Pin, Tape              | 4   |
| 11               | 316     | Fitting, Grease        | 1   |
| 12               | 317     | Screw, Lock            | 1   |
| 13               | 318     | Plug, Drain            | 2   |
| 14               | 303     | Case, Centre           | 1   |
| 15               | 304G    | Gear, Buna-N           | 1   |
| 16               | 304A    | Shaft, Idler           | 1   |
| 17               | 305A    | Shaft, Drive           | 1   |
| 18               | 310     | Flange, Adapter        | 2   |
| 19               | 311     | Gasket, Flange         | 2   |
| 20               | 312     | Flange, Bolt           | 8   |

| 300 Series Options |                       |              |                     |           |                                |
|--------------------|-----------------------|--------------|---------------------|-----------|--------------------------------|
| Stock No.          | Description           | Stock No.    | Description         | Stock No. | Description                    |
| 309 BG             | Bushing, Brz. Grooved | 337          | Seat, Ball          | 23/33 TB  | Bushings, Teflon               |
| 309 T              | Bushing, Teflon       | 334          | Nut, Bypass         | *3 SS     | SS Shafts                      |
| 313 T              | Packing, Teflon       | 23/33 BP     | Plate, Bypass       | *304 BG   | Bronze Gear                    |
| 319                | Nut, Bypass Valve     | 23/33 EXT    | Shaft, Extension    | *304 CG   | Steel Gear                     |
| 330                | Screw, Adj. Bypass    | 23/33 SS EXT | Shaft, SS Extension | *304UG    | Urethane Gear                  |
| 331                | Spring, Bypass        | 23/33 HP     | Plate, Hard Wear    | *304 V    | Viton Gear                     |
| 335                | Seat, Spring          | 23/33 RK     | Repair Kit          | *310 A    | Flange, Adapter Mounting       |
| 336                | Ball, Bypass          | 23/33 RKT    | Repair Kit, Teflon  | *310 HM   | Flange, Adapter f/ Hydro-Mulch |

\* Denotes 4 digit code number, use pump size for first number

