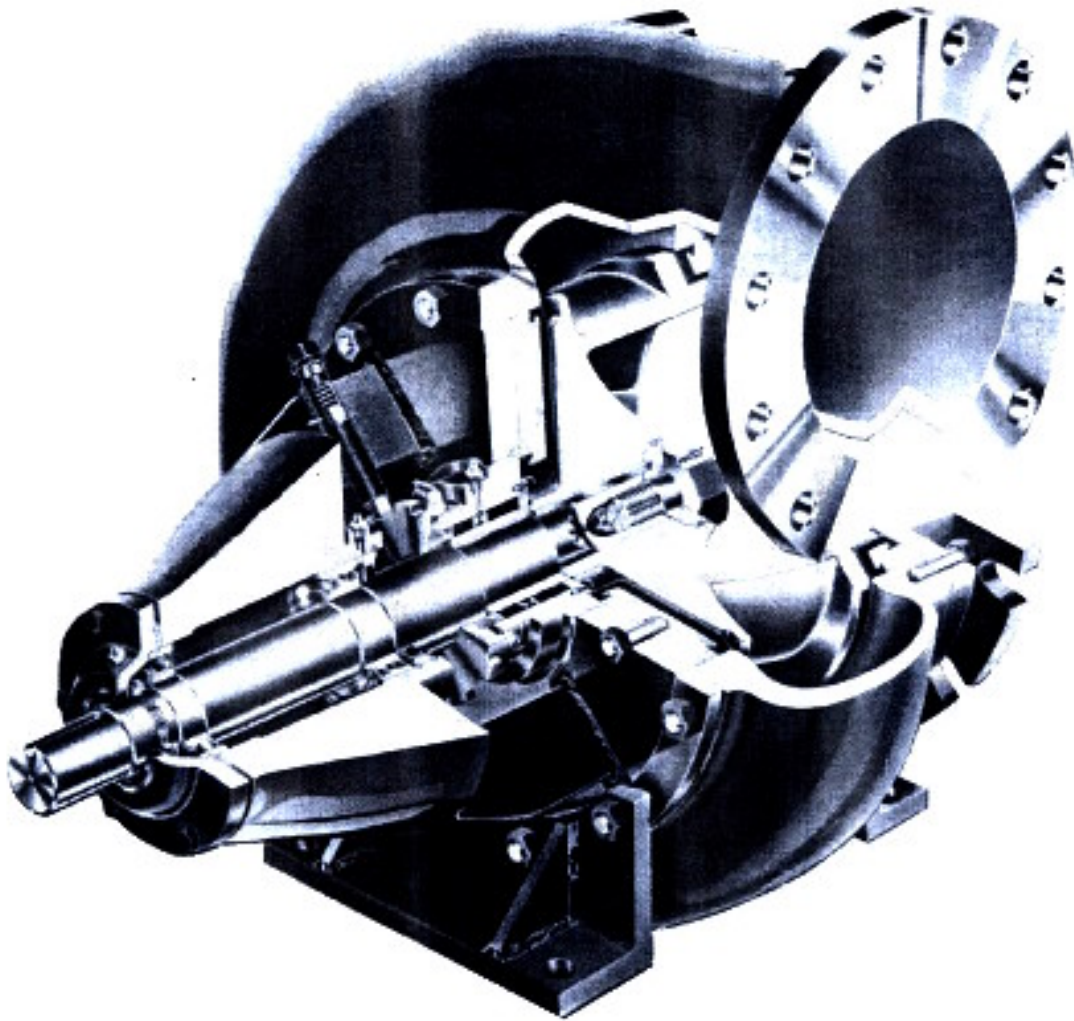

GARDNER DENVER®

300CPX997 Rev B
May, 2006



CENTRIFUGAL PUMPS

**Gardner
Denver**

ECN 1030764

PARTS LIST FOR CENTRIFUGAL PUMPS

MAINTAIN PUMP RELIABILITY AND PERFORMANCE WITH GENUINE GARDNER DENVER PARTS AND SUPPORT SERVICES

Gardner Denver® genuine pump parts are manufactured to design tolerances and are developed for optimum dependability. Design and material innovations are the result of years of experience with hundreds of different pump applications. Reliability in materials and quality assurance is incorporated in our genuine replacement parts.

Your authorized Gardner Denver Sales Office offers all of the backup you'll need. The Fort Worth Manufacturing Facility maintains a large inventory of genuine parts.

Gardner Denver supports your needs with these services:

1. Trained parts specialists to assist you in selecting the correct replacement parts.
2. Repair and maintenance kits designed with the necessary parts to simplify servicing your pump.

Authorized service technicians are factory trained and skilled in pump maintenance and repair. They are ready to respond and assist you by providing fast, expert maintenance and repair services.

For the location of your local authorized Gardner Denver distributor, refer to the yellow pages of your phone directory or contact:

Factory (Tulsa):

Gardner Denver Well Servicing Pumps
4747 South 83rd East Avenue
Tulsa, Oklahoma 74145

Phone: (918) 664-1151
(800) 738-8099

Fax: (918) 664-6225

Service Center (Odessa):

Chaparral
2121 West 44th Street
Odessa, TX 79768

Phone: (432) 366-5433
(800) 368-1134

Fax: (432) 363-9940

Service Center (Ft. Worth):

Geoquip
7533 Kathy Lane
Ft. Worth, Texas 76126

Phone: (817) 249-6400
(800) 824-0271

Fax: (817) 249-6401

INSTRUCTIONS FOR ORDERING REPAIR PARTS

When ordering parts, specify Pump MODEL and SERIAL NUMBER (see nameplate on unit).

All orders for Parts should be placed with the Tulsa or Ft. Worth facility.

SPECIFY EXACTLY THE NUMBER OF PARTS REQUIRED.

GARDNER DENVER PRODUCT WARRANTY

GENERAL PROVISIONS AND LIMITATIONS

Gardner Denver (the "Company") warrants to each original retail purchaser ("Purchaser") of its new products, assemblies or parts from the Company or its authorized distributors that such products are, at the time of delivery to the Purchaser, made with good material and workmanship. No warranty is made with respect to:

1. Any product which has been repaired or altered in such a way, in the Company's judgment, as to affect the product adversely.
2. Any product which has, in the Company's judgment, been subject to negligence, accident, or improper storage, improper installation, operation or application. (Examples: over-pressure, sand-outs, cavitation, corrosion, erosion or degradation).
3. Any product which has not been operated or maintained in accordance with the recommendations of the Company.
4. Components or accessories manufactured, warranted and serviced by others. Any reconditioned or prior owned product.

Claims for items described in (4) above should be submitted directly to the manufacturer.

WARRANTY PERIOD

The Company's obligation under this warranty is limited to repairing or, at its option, replacing, during normal business hours at an authorized service facility of the Company, any part or assembly which in the Company's judgment proved to have unsatisfactory material or workmanship within the applicable Warranty Period as follows.

Except for the products or components listed below, and subject to the limitations and restrictions set forth in the "Disclaimer" section set forth below, the Warranty Period for all products is 1,250 hours of operation or three (3) months after start-up, not to exceed 120 days after delivery to Purchaser, whichever occurs first. The exceptions are as follows:

1. Power end is warranted for twelve (12) months from date of start-up or eighteen (18) months from date of delivery to the Purchaser, whichever occurs first.
2. Forged steel fluid cylinders are warranted for materials and workmanship for 6 months

from the date of installation or 18 months from the date of delivery to the purchaser, which ever occurs first.

3. Repairs are warranted for 90 days from the date of delivery, for the workmanship and materials of the new parts installed.
4. Weld repaired fluid ends and weld repaired components are not warranted.
5. Expendable fluid end parts, including, but not limited to, valves, valve parts, packing, liners and pistons, are not covered by this warranty due to variable abrasive nature of material pumped.

PRESERVATION ASSEMBLIES DESTINED FOR STORAGE

In order for warranty acceptance any pump assembly not immediately installed or destined to be in storage or in transit for extended periods of time must be prepared for storage as defined in the Company's Long Term Storage Procedure. This includes but is not limited to:

- Drain and thoroughly clean inside power end crankcase.
- Spray rust inhibiting oil on all bearing, machined and inside surfaces of the power end.
- Induce clean gear oil into any circulating pump, filter, heat exchanger and piping.
- Remove valves, seats and plungers from the fluid end. Thoroughly clean and dry these parts and all internal surfaces. Coat all cylinder bores, valve covers and reusable expendable parts with rust preventative.
- Flush all water, and contaminants from pump, tanks, hoses and spray nozzles. Spray all components with a rust inhibiting oil.
- Rotate pump every 30 days to insure bearings are oiled.
- At the expense of the Purchaser, any product properly preserved must be inspected by an authorized agent of the Company, prior to the Company, granting any extended warranty beyond that stated in this warranty.

LABOR TRANSPORTATION AND INSPECTION

The Company will provide labor, by Company representative or authorized service personnel, for repair or replacement of any product or part thereof which in the Company's judgment is proved not to be as warranted. Labor shall be limited to the amount specified in the Company's labor rate schedule. Labor costs in excess of the Company rate schedules caused by, but not

limited to, location or inaccessibility of the equipment, or labor provided by unauthorized service personnel is not provided for by this warranty.

All costs of transportation of product or parts claimed not to be as warranted and, of repaired or replacement parts to or from such service facility shall be borne by the Purchaser. The Company may require the return of any part claimed not to be as warranted to one of its facilities as designated by the Company, transportation prepaid by the Purchaser, to establish a claim under this warranty.

Replacement parts provided under the terms of this warranty are warranted for the remainder of the Warranty Period of the product upon which installed to the same extent as if such parts were original components.

The Company may request a root cause analysis be performed in-order to identify if a request for warranty claim meets the requirements of this warranty.

DISCLAIMER

Except as to title, the foregoing warranty is the sole and exclusive warranty of the Company. The Company hereby extends other manufactures' warranty or guaranties, if any given to Company by such manufacturer, but only to the extent the Company is able to enforce such warranty or guaranties. The Company has not authorized any party to make any representation or warranty other than as expressly set forth herein. SELLER HEREBY DISCLAIMS AND EXCLUDES ANY OTHER EXPRESS, IMPLIED OR STATUTORY WARRANTIES, ARISING BY OPERATION OF LAW OR OTHERWISE, INCLUDING, WITHOUT LIMITATION, ANY WARRANTIES OF MERCHANTABILITY OR FITNESS FOR A PARTICULAR PURPOSE. COMPANY MAKES NO WARRANTIES OR REPRESENTATIONS OF ANY KIND WHATSOEVER (EXPRESS, IMPLIED OR STATUTORY), OF LAW OR OTHERWISE, ON ANY EQUIPMENT, COMPONENT PARTS OR ACCESSORIES SOLD HEREUNDER WHICH, ARE NOT MANUFACTURED BY COMPANY.

NOTWITHSTANDING ANYTHING HEREIN TO THE CONTRARY, THE FOREGOING WARRANTY SHALL BE THE SOLE AND EXCLUSIVE REMEDY

AVAILABLE TO THE PURCHASER. UNDER NO CIRCUMSTANCES, WHETHER IN CONTRACT, TORT OR OTHERWISE, SHALL THE COMPANY'S TOTAL LIABILITY ARISING IN CONNECTION WITH ANY PURCHASE ORDER EXCEED THE AMOUNT OF ANY SALES OR OTHER PROCEEDS RECEIVED PURSUANT THERETO. IN ADDITION, UNDER NO CIRCUMSTANCES, WHETHER IN CONTRACT, TORT OR OTHERWISE, SHALL THE COMPANY BE LIABLE FOR LIQUIDATED, SPECIAL, INDIRECT, INCIDENTAL, EXEMPLARY, OR CONSEQUENTIAL DAMAGES, EXPENSES OR COSTS, INCLUDING, WITHOUT LIMITATION, LOST PROFITS OR FACILITY DOWNTIME, HOWEVER CAUSED AND EVEN IF THE POTENTIAL OF SUCH DAMAGES WAS DISCLOSED AND/OR KNOWN.

No statement, representation, agreement, or understanding, oral or written, made by any agent, distributor, representative, or employee of the Company which is not contained in this Warranty will be binding upon the Company unless made in writing and executed by an officer of the Company.

This warranty shall not be effective as to any claim which is not presented within 30 days after the date upon which the product is claimed not to have been as warranted. Any action for breach of this warranty must be commenced within one year after the date upon which the cause of action occurred.

Any adjustment made pursuant to this warranty shall not be construed as an admission by the Company that any product was not as warranted.

WARRANTY REQUESTS

Products to be returned for warranty analysis shall be approved for return in writing by the Company prior to shipment. All requests for product return shall be submitted by email. Facsimile or letter to:

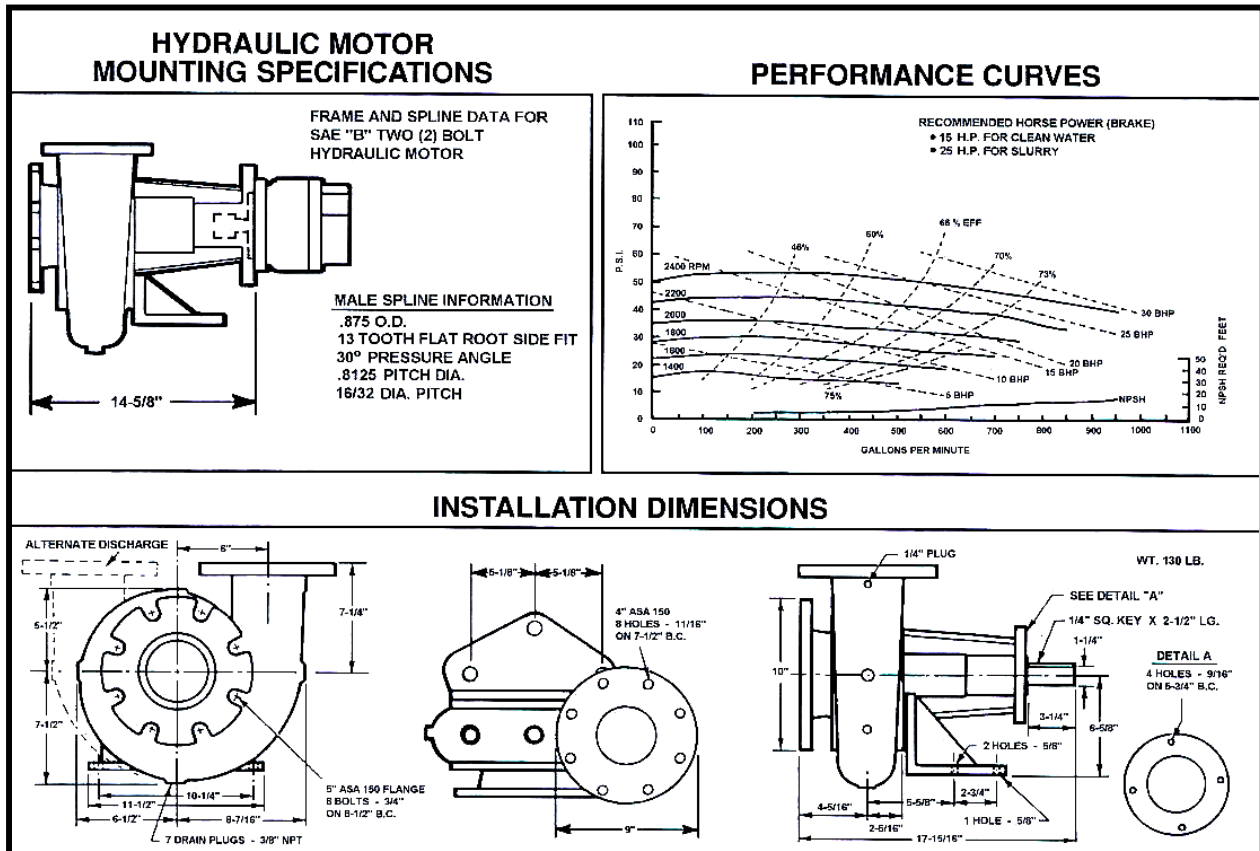
Warranty Department c/o
Gardner Denver Petroleum Pumps
4747 South 83rd East Avenue
Tulsa, Oklahoma 74145

Email: CCR.QAR@gardnerdenver.com
Facsimile: (918) 664-6225

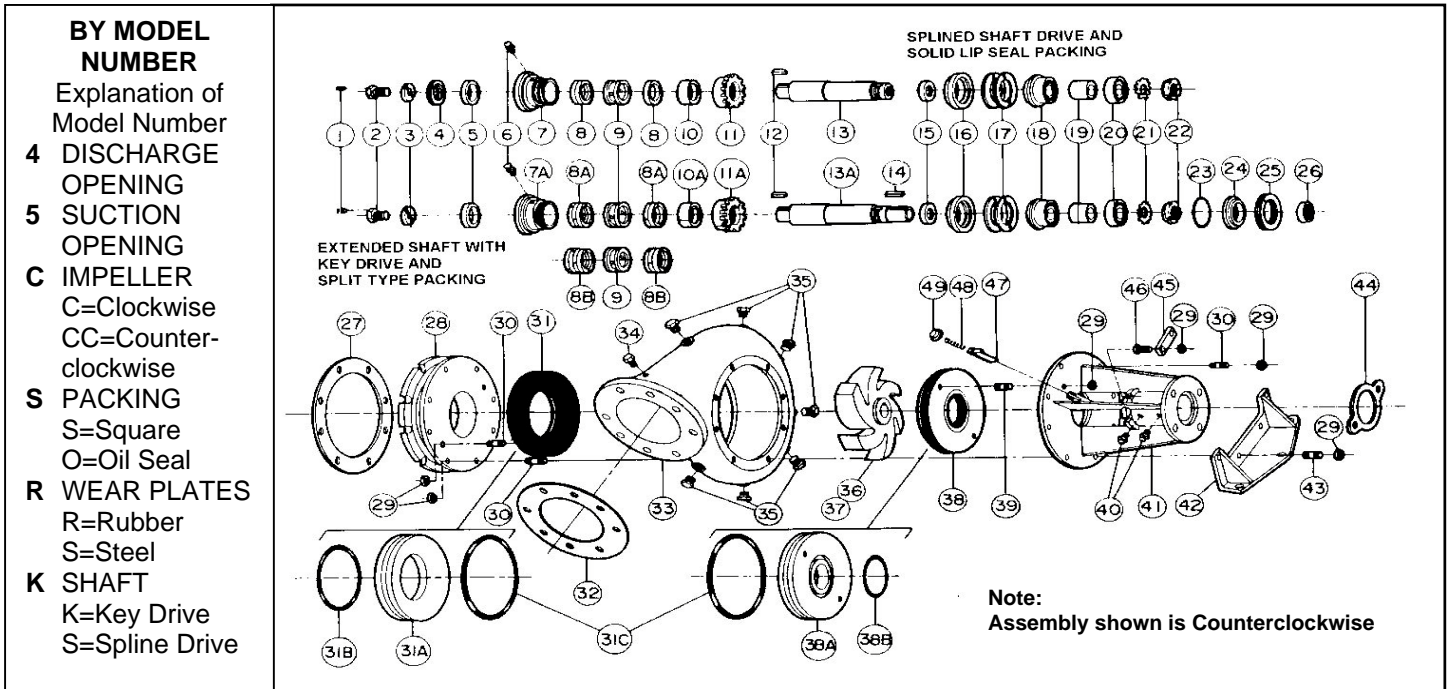
Gardner Denver

GARDNER DENVER DESIGN FEATURES GIVE LONG LIFE & EASY MAINTENANCE.

- A lightweight, compact, extremely rugged pump requiring minimal mounting space.
- A heavy steel frame and mounting bracket for horizontal or vertical positioning.
- Every frame is predrilled to accept a direct drive SAE "B" hydraulic motor, in conjunction with Gardner Denver's internal splined shaft to eliminate down time due to misalignment. A key driven shaft is also available.
- Segmented construction allows the customer to purchase only those parts necessary for repair.
- Sacrificial front and rear wear plates are provided with every new pump. Rubber coated plates are normally provided, although steel plates are available for exotic mediums such as Zylene and Toluene.
- Change of rotation may be easily accomplished by simply removing, turning and positioning the volute, and changing the impeller to match the desired direction of rotation.
- The open impellers allow the free movement of large particles and extremely heavy, abrasive laden slurries. Available in either clockwise or counterclockwise rotation, the impeller is secured to the shaft by a superior designed locking system.
- We offer two packing choices. Solid lip seals provide efficient service with a minimum amount of attention. Split compression type packing is available for more severe service conditions.
- Bearings are double row inboard for radial thrusts, and a single row outboard for axial thrusts.



4 x 5

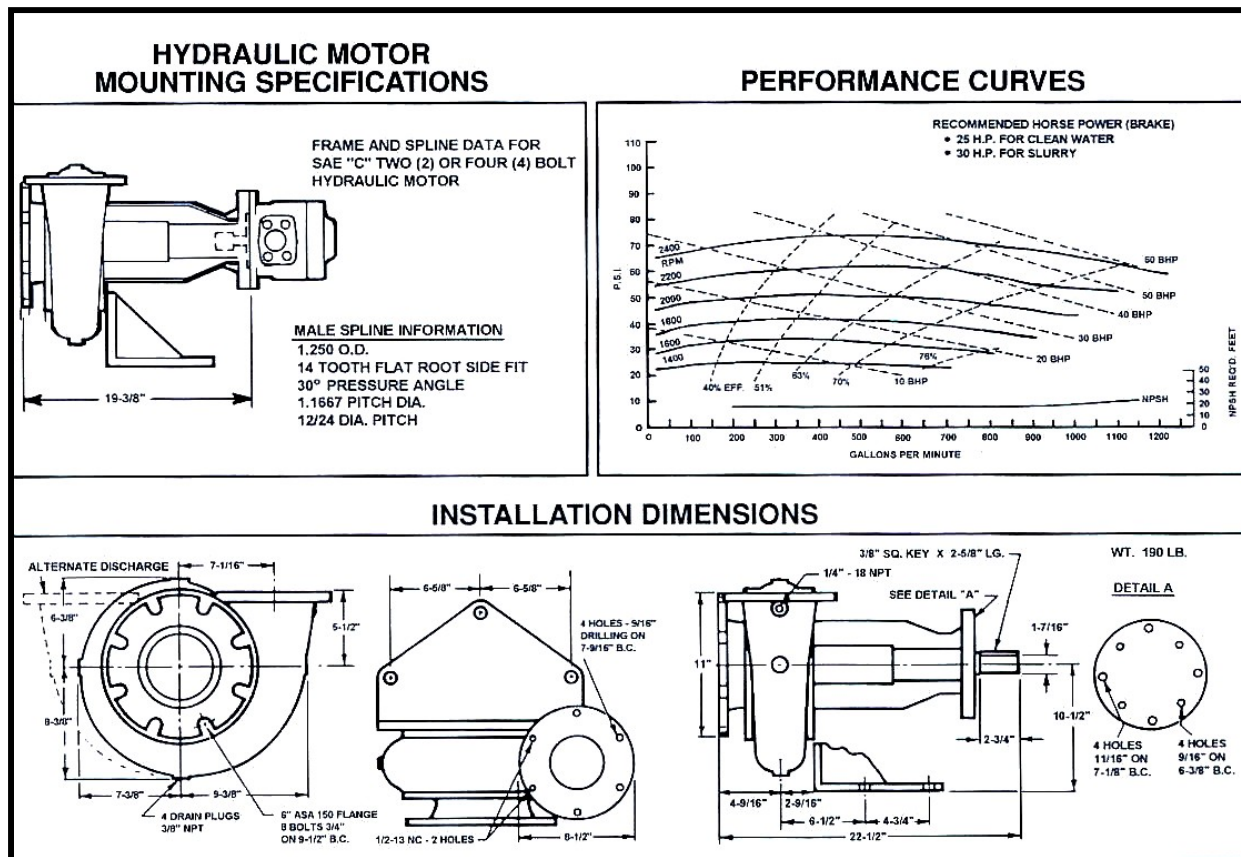


Ref No.	Name of Part	Qty.	Part No.	Ref. No.	Name of Part	Qty.	Part No.
1	SET SCREW.....	1	28775	28	SUCTION ADAPTOR	1	19838
2	IMPELLER BOLT	1	19846-T	29	NUT	24	39741
3	IMPELLER LOCK.....	1	19843-T	30	STUD.....	14	23244
4	SNAP RING	1	26019	31	FRONT RUBBER COATED WEAR PLATE.....	1	TUL19849
5	THROAT BUSHING.....	1	20123	31A	FRONT STEEL Wear Plate	1	32554
6	GREASE FITTING.....	1	45010		(Requires O-rings)		
7	Not Offered (Replaced by 7A)			31B	O-RING, For Front Steel Wear Plate	1	25BC157
7A	STUFFING BOX (Split Packing)	1	19842-T	31C	O-RING, For Front/Rear Steel Wear Plates.....	2	25BC206
8	OIL SEAL SOLID PACKING.....	3 or 4	6679	32	GASKET, DISCHARGE.....	1	35216
8A	SQUARE COMPRESSION Packing.....	1 Set	26018	33	VOLUTE.....	1	19830
9	LANTERN GLAND	1	19850	34	PIPE PLUG	1	15651
10	PACKING FOLLOWER, SOLID.....	1	19845	35	PIPE PLUG	7	15653
10A	PACKING FOLLOWER, 2 PIECE	1	19845-2P	36	IMPELLER, Counterclockwise	1	19836
11	STUFFING BOX NUT, SOLID	1	19848	37	IMPELLER, Clockwise.....	1	TUL19835
11A	STUFFING BOX NUT, 2 PIECE	1	19848-2P	38	REAR RUBBER WEAR PLATE	1	19853
12	IMPELLER KEY.....	1	45002	38A	REAR STEEL WEAR PLATE.....	1	32553
13	IMPELLER SHAFT, SPLINED	1	19839		(Requires O-Rings)		
13A	IMPELLER SHAFT, EXTENDED KEY DRIVE.....	1	29132	38B	O-RING, (for rear steel wear plate).....	1	25BC583
14	DRIVE KEY.....	1	45348	39	STUD, REAR STEEL WEAR PLATE	2	23245
15	OIL SEAL, INBOARD.....	1	15004	40	GREASE FITTING (One Vented).....	1 Set	38140
16	FRAME CAP.....	1	TUL19854	41	FRAME.....	1	19809
17	SHIM	2	19847	42	MOUNTING BRACKET	1	29141
18	BEARING, Inboard double row	1	45307	43	STUD, MOUNTING BRACKET/FRAME/VOLUTE	4	23242
19	BEARING SPACER.....	1	19844	44	GASKET, HYDRAULIC MOTOR/FRAME	1	15286
20	BEARING, Outboard Single Row.....	1	7607	45	STRAP	2	19855
21	BEARING LOCK WASHER	1	26015	46	HEX BOLT, STRAP/FRAME	4	655ED080
22	BEARING LOCK NUT	1	26014	47	LATCH (Stuffing Box Cap).....	1	Tul19498
23	O-RING	1	25AH18	48	SPRING.....	1	23868
24	OIL SEAL RETAINER, OUTBOARD	1	TUL19852	49	PIPE CAP.....	1	23015
25	SNAP RING, OUTBOARD	1	26017				
26	OIL SEAL, OUTBOARD.....	1	12456				
27	GASKET, SUCTION.....	1	35193				



GARDNER DENVER DESIGN FEATURES GIVE LONG LIFE & EASY MAINTENANCE.

- A lightweight, compact, extremely rugged pump requiring minimal mounting space.
- A heavy steel frame and mounting bracket for horizontal or vertical positioning.
- Every frame is predrilled to accept a direct drive SAE "C" two or four bolt-hydraulic motor in conjunction with Gardner Denver's internal splined shaft to eliminate down time due to misalignment. A key driven shaft is also available.
- Segmented construction allows the customer to purchase only those parts necessary for repair.
- Sacrificial front and rear wear plates are provided with every new pump. Rubber coated plates are normally provided, although steel plates are available for exotic mediums such as Zylene and Toluene.
- Change of rotation may be easily accomplished by simply removing, turning and positioning the volute, and changing the impeller to match the desired direction of rotation.
- The open impellers allow the free movement of large particles and extremely heavy, abrasive laden slurries. Available in either clockwise or counterclockwise rotation, the impeller is secured to the shaft by a superior designed locking system.
- We offer two packing choices. Solid lip seals provide efficient service with a minimum amount of attention. Split compression packing is available for more severe service conditions.
- Bearings are double row inboard for radial thrusts, and a single row outboard for axial thrusts.

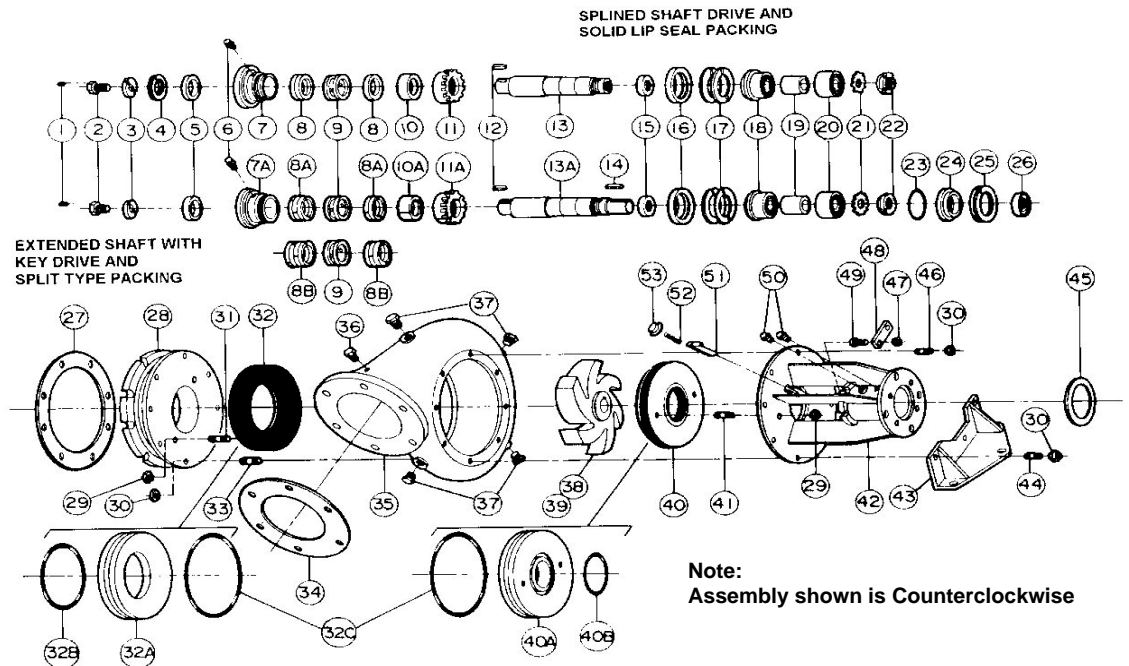


5 x 6

ORDER BY MODEL NUMBER

Explanation of Model Number

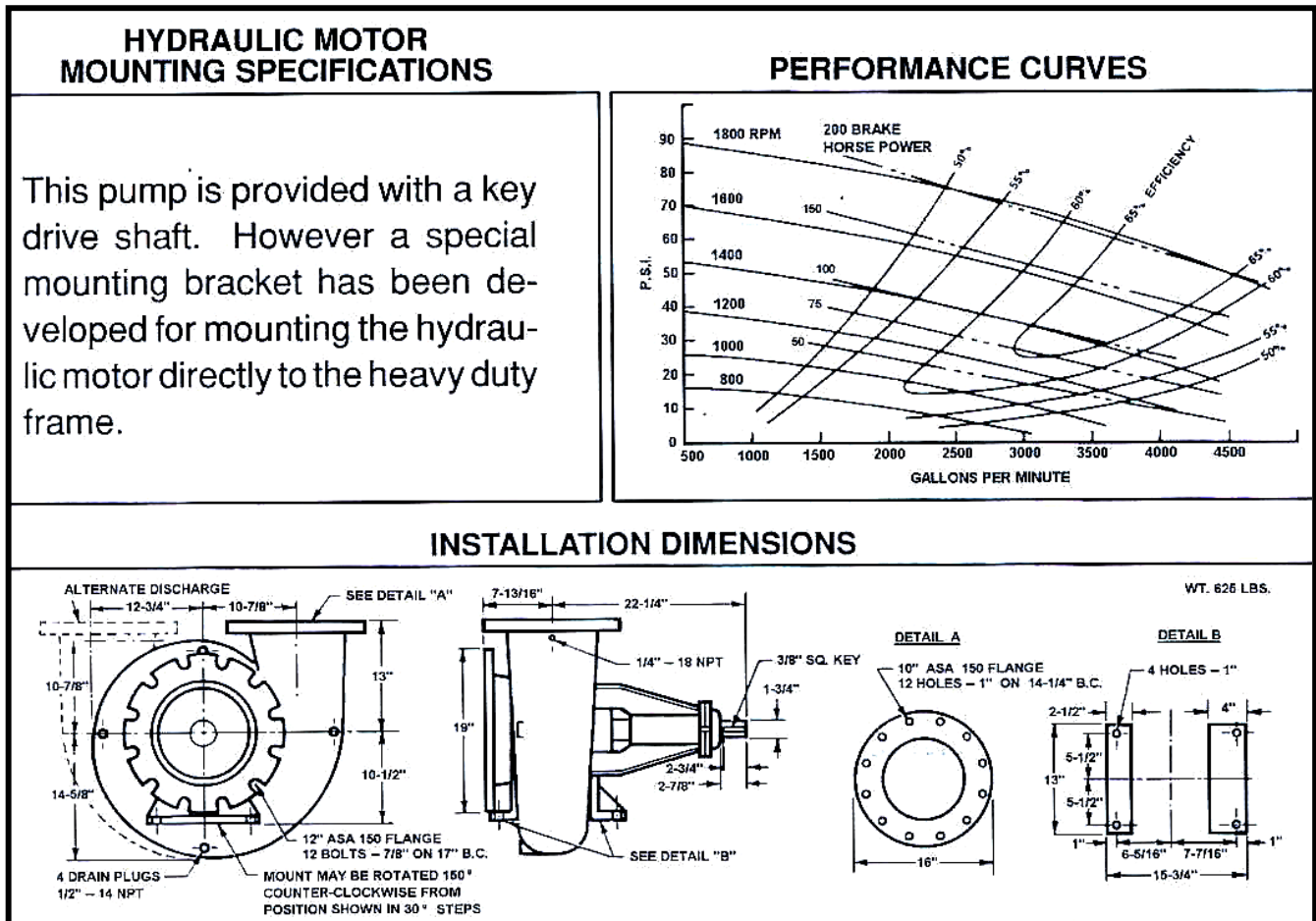
- 5 DISCHARGE OPENING
- 6 SUCTION OPENING
- C IMPELLER
 - C=Clockwise
 - CC=Counter-clockwise
- S PACKING
 - S=Square
 - O=Oil Seal
- R WEAR PLATES
 - R=Rubber
 - S=Steel
- K SHAFT
 - K=Key Drive
 - S=Spline Drive



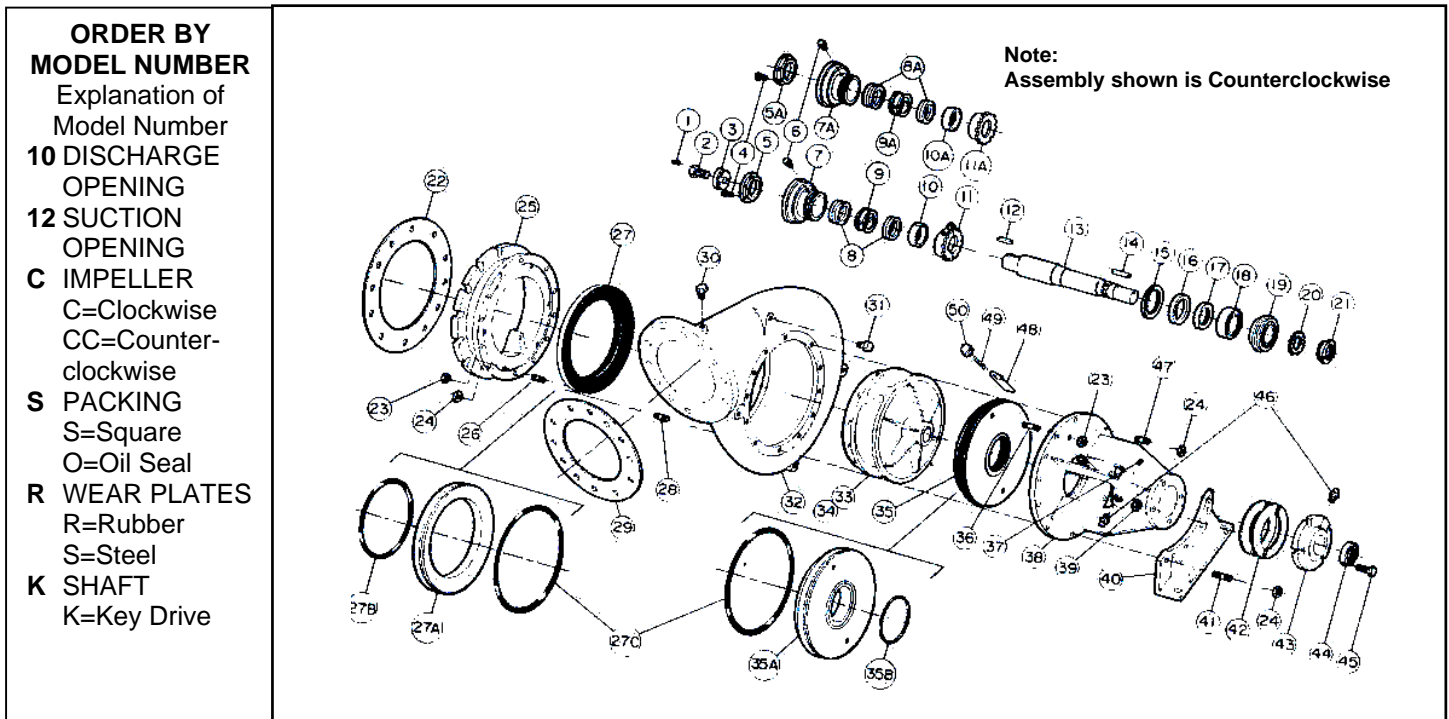
Ref No.	Name of Part	Qty.	Part No.	Ref. No.	Name of Part	Qty.	Part No.
1	SET SCREW.....	1	28775	30	NUT.....	16	23260
2	IMPELLER BOLT.....	1	18829-T	31	STUD, FRONT WEAR PLATE SUCTION ADAPTOR.....	2	23244
3	IMPELLER LOCK.....	1	18838-T	32	FRONT RUBBER COATED WEAR PLATE.....	1	18822
4	SNAP RING.....	1	23144	32A	FRONT STEEL Wear Plate.....	1	34018
5	THROAT BUSHING.....	1	Tul20122		(Requires O-rings)		
6	GREASE FITTING.....	1	45010	32B	O-RING, For Front Steel Wear Plate	1	25BC205
7	Not Offered (Replaced by 7A)			32C	O-RING, For Front/Rear Steel Wear Plates.....	2	25BC423
7A	STUFFING BOX (Split Packing).....	1	18835-T	33	STUD SUCTION ADAPTOR/VOLUTE.....	8	TUL21904
8	OIL SEAL SOLID PACKING.....	3 or 4	11551	34	GASKET, DISCHARGE.....	1	TUL35194
8A	SQUARE COMPRESSION Packing (5 pieces per set)	1 Set	23541	35	VOLUTE.....	1	18814
9	LANTERN GLAND.....	1	18828	36	PIPE PLUG.....	1	15651
10	PACKING FOLLOWER, SOLID.....	1	TUL18830	37	PIPE PLUG.....	4	15653
10A	PACKING FOLLOWER, 2 PIECE.....	1	18830-2P	38	IMPELLER, Counterclockwise.....	1	18824
11	STUFFING BOX NUT, SOLID.....	1	18837	39	IMPELLER, Clockwise.....	1	18823
11A	STUFFING BOX NUT, 2 PIECE.....	1	18837-2P	40	REAR RUBBER COATED WEAR.....	1	18836
12	IMPELLER KEY.....	1	25161	40A	REAR STEEL WEAR PLATE.....	1	34017
13	IMPELLER SHAFT, SPLINED.....	1	18826		(Requires O-Rings)		
13A	IMPELLER SHAFT, EXTENDED-KEY.....	1	18825	40B	O-RING, (for rear steel wear plate).....	1	25BC347
14	DRIVE KEY.....	1	45116	41	STUD, REAR STEEL WEAR PLATE.....	2	23245
15	OIL SEAL, INBOARD.....	1	20098	42	FRAME.....	1	18810
16	FRAME CAP.....	1	18821	43	MOUNTING BRACKET.....	1	TUL29358
17	SHIM.....	2	18832	44	STUD, MOUNTING BRACKET/FRAME/VOLUTE.....	3	TUL23248
18	BEARING, Inboard double row.....	1	45309	45	GASKET, HYDRAULIC MOTOR/FRAME.....	1	23494
19	BEARING SPACER.....	1	18831	46	STUD, VOLUTE/FRAME.....	5	23246
20	BEARING, Outboard Single Row.....	1	5609	47	LOCKNUT.....	4	441807000
21	BEARING LOCK WASHER.....	1	23136	48	STRAP.....	2	18855
22	BEARING LOCK NUT.....	1	89702	49	BOLT STRAP/FRAME.....	4	45115
23	O-RING.....	1	25AH26	50	GREASE FITTING, (One Vented).....	1 Set	38140
24	OIL SEAL RETAINER, OUTBOARD.....	1	18833	51	LATCH (for Stuffing Box Cap).....	1	TUL19498
25	SNAP RING, OUTBOARD.....	1	23145	52	SPRING.....	1	23868
26	OIL SEAL, OUTBOARD.....	1	16117	53	PIPE CAP.....	1	23015
27	GASKET, SUCTION.....	1	35264				
28	SUCTION ADAPTOR.....	1	TUL18820				
29	NUT.....	4	39741				

GARDNER DENVER DESIGN FEATURES GIVE LONG LIFE & EASY MAINTENANCE.

- A medium heavy weight, extremely rugged pump requiring minimal mounting space.
- A heavy steel frame and mounting bracket for horizontal or vertical positioning.
- The 10 x 12 features a keyed shaft drive system.
- Segmented construction allows the customer to purchase only those parts necessary for repair.
- Sacrificial front and rear wear plates are provided with every new pump. Rubber coated plates are normally provided, although steel plates are available.
- Change of rotation may be easily accomplished by simply removing, turning and repositioning the volute, and changing the impeller to match the desired direction of rotation.
- The dynamically closed pattern impellers are designed for moving heavy, abrasive laden slurries and are available in either clockwise or counterclockwise rotation. The impellers are secured to the shaft by a superior designed locking system.
- We offer two packing choices. Solid lip seals provide efficient service with a minimum amount of attention. Split compression is available for more severe conditions.
- Bearings are double row inboard radial, and a single row outboard for axial thrusts.



10 x 12



Ref No.	Name of Part	Qty.	Part No.	Ref. No.	Name of Part	Qty.	Part No.
1	SET SCREW.....	1	28775	27A	FRONT STEEL WEAR PLATE.....	1	18777
2	IMPELLER BOLT	1	510878		(Requires O-Ring)		
3	IMPELLER LOCK.....	1	18729	27B	O-RING (Front Steel Wear Plate).....	1	187VUL
4	BOLT (Throat Bushing/Stuffing Box)....	6	75D58	27C	O-RING (Both Steel Wear Plates).....	2	25W85
5	THROAT BUSHING (3-7/16 stuffing box)	1	33154	28	STUD, SUCTION Adapter/Volute.....	12	23253
5A	THROAT BUSING (3-1/2 stuffing box)....	1	40958	29	GASKET, DISCHARGER	1	27293
6	1/4 STRAIGHT ZERK FITTING	1	45010	30	1/4 HEX STEEL PIPE PLUG	1	15651
7	STUFFING BOX (Square Packing).....	1	18723	31	1/2 HEX STEEL PIPE PLUG	4	16125
7A	STUFFING BOX (oil Seal Packing)	1	40955	32	VOLUTE.....	1	18706
8	SQUARE COMPRESSION PACKING	1 Set	TUL21090	33	CCW IMPELLER (counterclockwise)...	1	18709
	(5 Pieces Per Set)			34	CW IMPELLER, Clockwise.....	1	18708
8A	OIL SEAL SOLID PACKING	1 Set	40959	35	REAR RUBBER COATED WEAR		
	(5 Pieces per Set)				PLATE.....	1	18722
9	LANTERN GLAND (3-7/16 Solid).....	1	TUL18735	35A	REAR STEEL WEAR PLATE.....	1	18778
9A	LANTERN GLAND (3-1/2 Solid).....	1	40957		(Requires O-Rings)		
10	PACKING FOLLOWER, 2 PIECE	1	18736-2P	35B	O-RING BUNA N (Rear Steel Wear		
10A	PACKING FOLLOWER, SOLID	1	40956		Plate).....	1	108515
11	STUFFING BOX NUT, 2 PIECE	1	18725-2P	36	STUD, REAR STEEL WEAR PLATE	2	TUL23248
11A	STUFFING BOX NUT, SOLID	1	18725	37	SET SCREW	1	23273
12	IMPELLER KEY.....	1	TUL44965	38	FRAME.....	1	TUL18712
13	IMPELLER SHAFT	1	18716	39	HEAVY HEX STEEL NUT, 3.8 N.C.	4	39741
14	DRIVE KEY.....	1	45116	40	MOUTING BRACKET.....	1	18710
15	SNAP RING, INBOARD	1	TUL21089	41	STUD, (bracket/frame/volute).....	4	23247
16	OIL RING RETAINER, INBOARD	1	18732	42	SHIM	2	18733
17	OIL SEAL, INBOARD.....	1	60G40	43	FRAME CAP	1	18727
18	BEARING, INBOARD DOUBLE ROW.....	1	5212	44	OIL SEAL, OUTBOARD	1	TUL18817
19	BEARING, OUTBOARD SINGLE ROW ...	1	47310	45	HEX BOLT, FRAM CAP/FRAME	4	655ED080
20	BEARING LOCK WASHER	1	21086	46	1/8 STRAIGHT ZERK FITTING	1 Set	38140
21	BEARING LOCK NUT	1	TUL21085		(One Vented)		
22	GASKET, ADAPTOR	1	27292	47	STUD, Volute/Frame.....	8	23252
23	HEAVY HEX STEEL NUT, 1/2 N.C	8	23260	48	LATCH (For Stuffing Box Nut).....	1	18980
24	HEAVY HEX STEEL NUT, 5/8 N.C	24	23261	49	SPRING.....	1	23268
25	SUCTION ADAPTOR	1	TUL18717	50	1/2 PIPE CAP.....	1	23015
26	STUD (front wear plate/suction adapter)	6	23246				
27	FRONT RUBBER WEAR PLATE.....	1	18721				



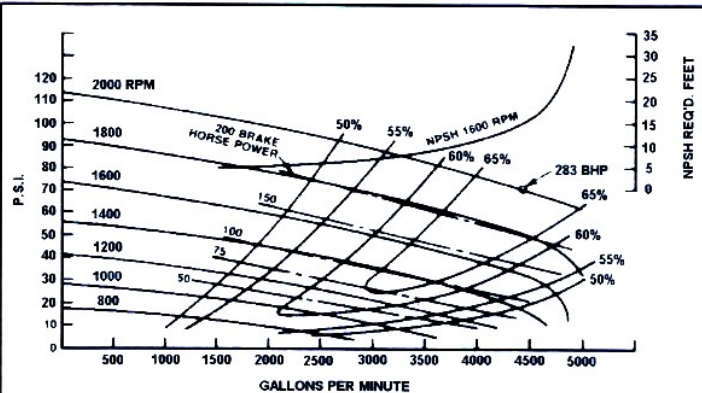
GARDNER DENVER DESIGN FEATURES GIVE LONG LIFE & EASY MAINTENANCE.

- A medium heavy weight, extremely rugged pump requiring minimal mounting space.
- A heavy steel frame and mounting bracket for horizontal or vertical positioning.
- The 10 x 12 HD drive system features a keyed shaft. Also available is a special coupling and mounting bracket, which allows a hydraulic motor to be directly mounted to the pump.
- Segmented construction allows the customer to purchase only those parts necessary for repair.
- Sacrificial front and rear wear plates are provided with every new pump. Rubber coated plates are normally provided, although steel plates are available.
- Change of rotation may be easily accomplished by simply removing, turning and repositioning the volute, and changing the impeller to match the desired direction of rotation.
- The dynamically closed pattern impellers are designed for moving heavy, abrasive laden slurries and are available in either clockwise or counterclockwise rotation. A superior designed locking system secures the impellers to the shaft.
- The 10 x 12 HD offers two packing choices. Solid lip seals provide efficient service with minimal amount of attention. Split compression type packing is available for more severe service conditions.
- Bearings are double row inboard for radial thrusts, and a double row outboard for axial thrusts.

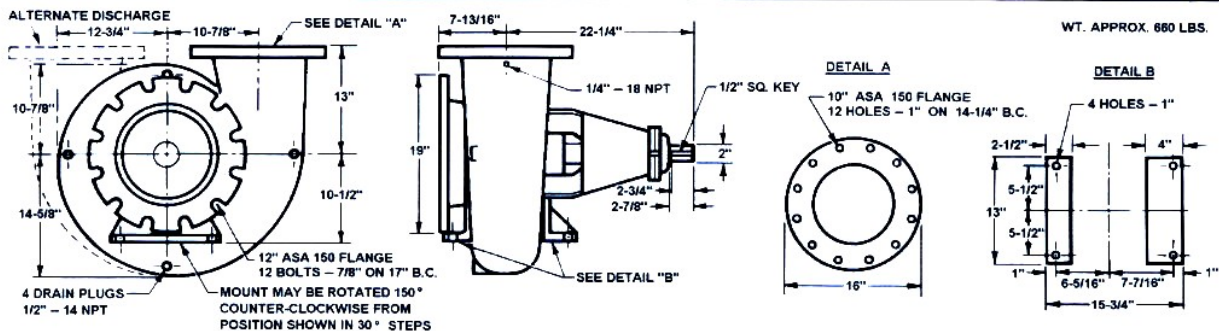
HYDRAULIC MOTOR MOUNTING SPECIFICATIONS

This pump is provided with a key drive shaft. However a special mounting bracket has been developed for mounting the hydraulic motor directly to the heavy duty frame. Several options do exist. Additional information will be provided upon request.

PERFORMANCE CURVES



INSTALLATION DIMENSIONS



10 x 12HD

ORDER BY MODEL NUMBER

Explanation of Model Number

10 DISCHARGE OPENING

12 SUCTION OPENING

C IMPELLER

C=Clockwise

CC=Counter-clockwise

S PACKING

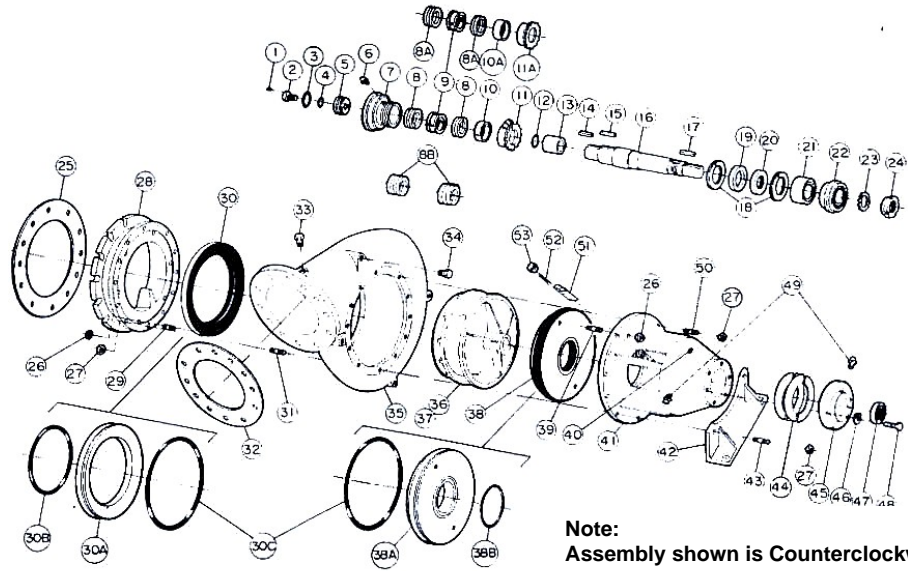
S=Square

O=Oil Seal

R WEAR PLATES

R=Rubber

S=Steel



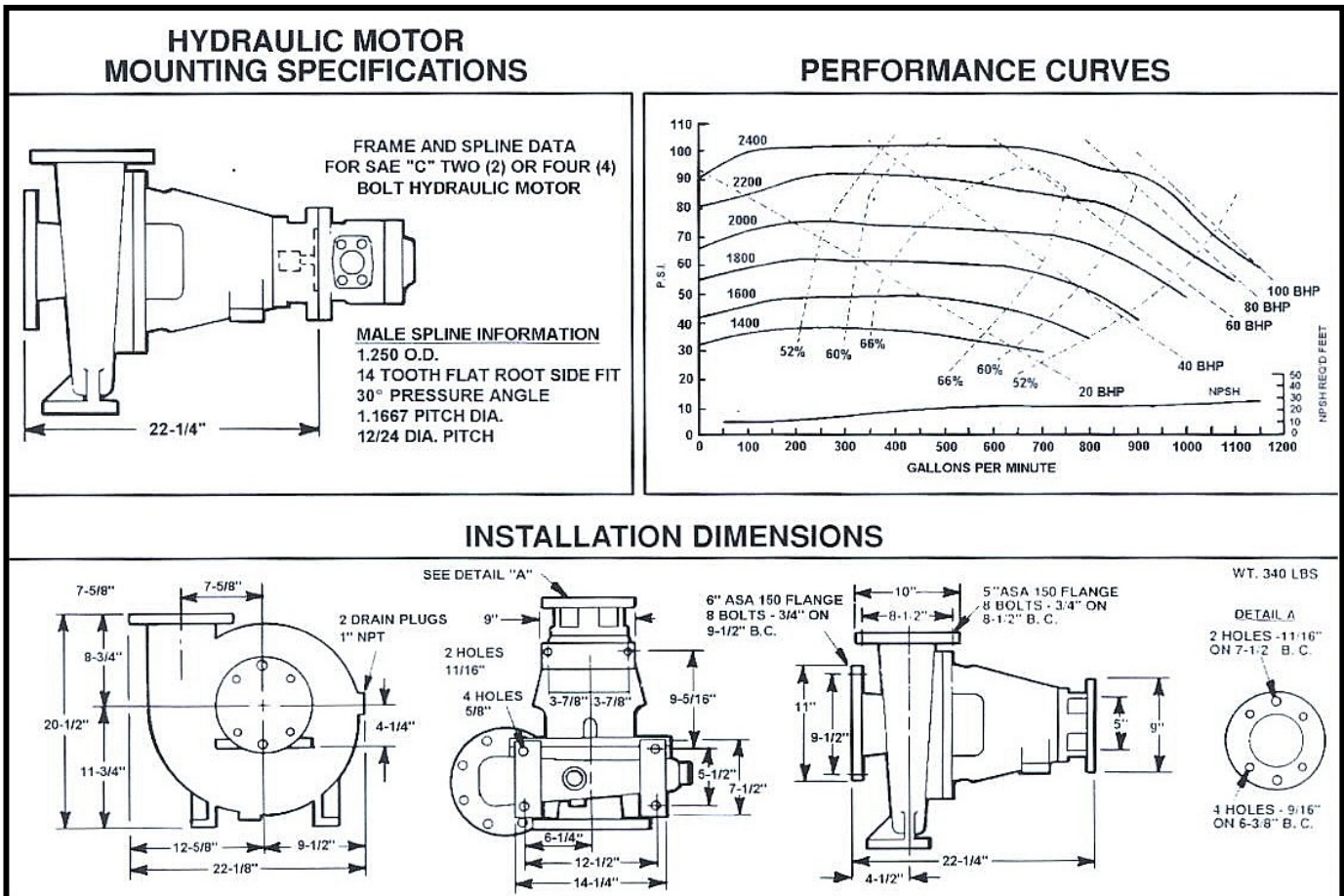
Note:
Assembly shown is Counterclockwise

Ref No.	Name of Part	Qty.	Part No.	Ref. No.	Name of Part	Qty.	Part No.
1	SET SCREW.....	1	28775	30	FRONT Rubber coated wear plate	1	18721
2	IMPELLER BOLT	1	58032	30A	FRONT STEEL WEAR PLATE.....	1	18777
3	O-RING, BUNA N	1	287232		(Requires O-Rings)		
4	O-RING, BUNA N	1	25W19	30B	O-RING (Front Steel Wear Plate).....	1	187VUL
5	IMPELLER LOCK.....	1	58146	30C	O-RING (Both Steel Wear Plate).....	2	25W85
6	1/4 STRAIGHT ZERK FITTING	1	45010	31	STUD (Suction Adaptor/Volute)	12	23253
7	STUFFING BOX	1	28723	32	GASKET, DISCHARGE.....	1	27293
8	SQUARE COMPRESSION PACKING	1 Set	28737	33	1/4 STEEL PIPE PLUG.....	1	15651
	(5 Pieces Per Set)			34	1/2 HEX STEEL PIPE PLUG	4	16125
8A	OIL SEAL PACKING	1 Set	415304	35	VOLUTE.....	1	18706
	(5 Pieces Per Set)			36	IMPELLER, Counter Clockwise.....	1	18709
9	LANTERN GLAND SOLID	1	28735	37	IMPELLER, Clockwise.....	1	18708
10	PACKING FOLLOWER, 2 PIECE	1	28736-2P	38	REAR RUBBER WEAR PLATE	1	18722
10A	PACKING FOLLOWER, SOLID	1	28736	38A	REAR STEEL WEAR PLATE.....	1	18778
11	STUFFING BOX NUT, 2 PIECE	1	28725	38B	O-RING BUNA N	1	108515
11A	STUFFING BOX NUT, SOLID	1	28726		(Rear Steel Wear Plate)		
12	O-RING, BUNA (Wear Sleeve).....	1	287149	39	STUD (Rear Steel Wear Plate/Frame....	2	TUL23248
13	HARDENED WEAR SLEEVE.....	1	28715	40	SET SCREW	1	23273
14	IMPELLER KEY.....	1	TUL44965	41	FRAME.....	1	28712
15	SLEEVE KEY.....	1	28766	42	MOUNTING BRACKET	1	18710
16	IMPELLER SHAFT	1	28716	43	STUD (mounting		
17	DRIVE KEY.....	1	28764		bracket/frame/volute).....	4	23247
18	SNAP RING	2	287525	44	SHIM	2	28733
19	OIL SEAL RETAINER	1	28732	45	FRAME CAP	1	28727
20	OIL SEAL, INBOARD.....	1	2009755	46	LOCKWASHER	6	445611000
21	BEARING, Inboard double row	1	5515	47	OIL, SEAL, OUTBOARD.....	1	450312
22	BEARING, Outboard double row	1	45612	48	HEX BOLT (FRAME CAP/FRAME).....	6	28770
23	BEARING LOCK WASHER	1	W-12	49	1/8 STRAIGHT ZERK FITTING (One		
24	BEARING LOCK NUT	1	N-12		Vented)	1 Set	38140
25	GASKET, SUCTION.....	1	27292	50	STUD (Frame/Volute)	8	23252
26	HEAVY HEX NUT, 1/2N.C.....	8	23260	51	LATCH (FOR STUFFING BOX NUT).....	1	18980
27	HEAVY HEX NUT, 5/8N.C.....	24	23261	52	SPRING.....	1	23868
28	SUCTION ADAPTOR	1	TUL18717	53	1/2 STEEL PIPE CAP	1	23015
29	STUD (Front Wear Plate/Suction Adapter)	6	23246				

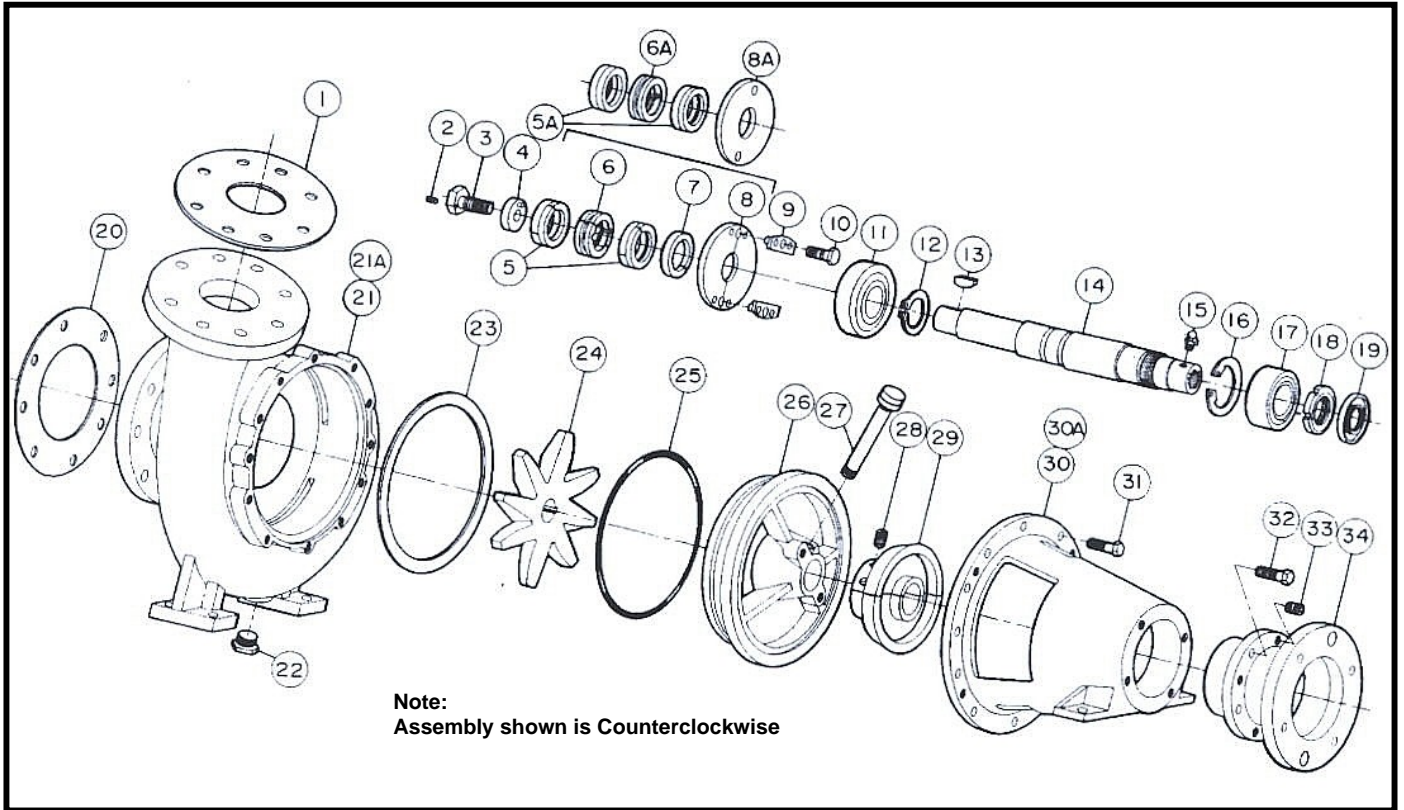
Gardner Denver

GARDNER DENVER DESIGN FEATURES GIVE LONG LIFE & EASY MAINTENANCE.

- The 2045 LX features two flow dividers resulting in three throats positioned 120° apart which allows for a balance of thrust and forces and low radial loads, shortened flow path, development of full pressure at 1/3 revolution of the impeller, distribution of wear at three points, the prevention of air entrapment and vapor lock, the reduction of shear and the improvement of viscosity handling characteristics.
- The GD 2045 LX drive system has a mounting adapter bracket predrilled to accept a direct drive SAE "C" two, of four bolt hydraulic motor, and in conjunction with our internal splined shaft eliminates down time due to misalignment.
- Simplistic construction requires less assembly time and less spare parts inventory.
- The impeller design is fully open and ideally suited for handling fluids containing suspended solids. Impeller is available in an 8-vane pattern with a clockwise rotation.
- The frame is available in two versions, economical cast iron and steel fabricated.
- The GD 2045 LX offers two packing choices. Solid lip seals provide efficient service with a minimum amount of attention. Split compression type packing is available for more severe service conditions.
- Bearings provide maximum radial and thrust load capacity and are protected by a water slinger.



2045LX



Ref No.	Name of Part	Qty.	Part No.	Ref. No.	Name of Part	Qty.	Part No.
1	GASKET DISCHARGE.....	1	35193	17	BEARING, OUTBOARD Double row	1	61116
2	SET SCREW.....	1	28775	18	BEARING LOCK NUT	1	61117
3	IMPELLER BOLT (Hex Design).....	1	56102	19	OIL SEAL, OUTBOARD.....	1	62961
4	IMPELLER LOCK WITH ROLL PIN.....	1	56103	20	GASKET SUCTION	1	35264
5	SPLIT LIP SEAL PACKING RING	4	29795	21	VOLUTE.....	1	5620LR
5A	OIL SEAL SOLID PACKING.....	3 or 4	5826	21A*	MODIFIED VOLUTE/NO PEDESTALS WITH EX DRAIN	1	5620LR-SP
6	LANTERN GLAND, 2 PIECE	1	29797	22	1" PIPE PLUG	2	17520
6A	LANTERN GLAND, SOLID	1	29782	*	1/2" PIPE PLUG	1	16125
7	SQUARE COMPRESSION PKG. RING....	1	29796	23	GASKET, BACKHEAD.....	1	24766
8	PACKING FOLLOWER, 2 PIECE	1	TUL29811	24	IMPELLER, 8 VANE	1	74814
8A	PACKING FOLLOWER, SOLID.....	1	29781	25	O-RING BACKHEAD.....	1	17449
9	KEEPER	2	29812	26	BACKHEAD.....	1	26081
10	HEX BOLT (Pkg. Follower/Backhead)....	2	103284	27	LUBE PIPE WITH CAP.....	1	14724
11	BEARING, INBOARD SINGLE ROW.....	1	TUL52480	28	RETAINING SCREW, SLINGER/SHAFT	1	17522
12	RETAINING RING, INBOARD.....	1	52481	29	SLINGER, 2 PIECE.....	1	29810
13	IMPELLER KEY.....	1	26083	30	FRAME, CAST.....	1	TUL62960
14	SHAFT, INTERNAL SPLINED DRIVE	1	61088	31	HEX BOLT, FRAME/VOLUTE.....	12	17515
15	GREASE ZERK	1	17516	32	HEX BOLT, BEARING COVER/FRAME.....	4	17519
16	RETAINING RING, OUTBOARD.....	1	26035	33	THRUST AJUSTMENT SCREW	4	26029
				34	BEARING COVER & MOTOR BRACKET.....	1	26084

GARDNER DENVER CENTRIFUGAL PUMP APPLICATIONS

OILFIELD:

BLENDERS
MIXERS
CIRCULATION
SUPERCHARGING
DESANDING
TRANSFER
WATER FLOOD
DISPOSAL WELLS
WASHDOWN

INDUSTRIAL

SLURRY
DESANDING
MIXING
TRANSFER
FOOD PROCESSING
CHEMICAL PROCESSING
IRRIGATION
MINING

OTHER GARDNER DENVER SERVICES

OVERHAUL AND/OR REWORK OF:
Damaged or worn out frac power frames, fluid ends, crossheads, or pressure headers, mudpumps, centrifugal and slurry pumps and 5- to 8- stage centrifugal pumps, heat exchanger tube bundle welding & refacing, etc. Our specialty – Turn around work.

**MISCELLANEOUS MACHINING
MILLING & BORING
TURNING (TO 42" DIA.)
FABRICATION
WELDING
COMPLETE FIXTURE & TOOLING
DEPARTMENT
HYDROSTATIC & DESTRUCTIVE TEST
FACILITY
SHOT PEENING & STRESS RELIEVING
75,000 P.S.I. AUTOFRETTAGE FACILITY**

OTHER GARDNER DENVER PRODUCTS

HIGH PRESSURE TRIPLEX PUMPS FOR ACIDIZING & FRACTURING

FEATURES:

STEEL FABRICATED POWER FRAME
SOLID ONE-PIECE CONNECTING ROD
PRECISION GROUND CROSSHEADS
FORGED ALLOW STEEL CRANKSHAFT
HIGH-GRADE ALLOY STEEL GEARS
FOUR MAIN ROLLER BEARINGS
ORIFICED LUBRICATION SYSTEM
LIGHTWEIGHT ALUMINUM COVERS
INTERCHANGEABLE PARTS/STOCK

HIGH PRESSURE FLUID ENDS FROM SOLID STEEL FORGINGS

FEATURES:

UNIFORMITY OF ALL INTERNAL SURFACES
ALL CORNERS GENEROUSLY REDIUSED
ALL BORES HAND POLISHED
SHOT PEENED
AUTORETTAGE CAPABILITY
CUSTOM DESIGNS MAKE ON CONTRACT,
BASED UPON RECEIPT OF
SPECIFICATIONS AND DRAWINGS
STANDARD REPLACEMENT CAN BE PROVIDED
FOR MOST PUMPS ON THE MARKET
SPECIAL MATERIALS AND/OR SPECIFIC
MODIFICATIONS MAY BE
INCORPORATED INTO MOST STANDARD
DESIGNS



GARDNER DENVER
Pump Products
4747 South 83rd East Ave. • Tulsa, Oklahoma • 74145
(918) 664-1151 • Out of State: (800) 637- 8099 • Fax: (918) 664-6225
Email: Service@gardnerdenvertulsa.com